

TWIN-E



creativity
without boundaries

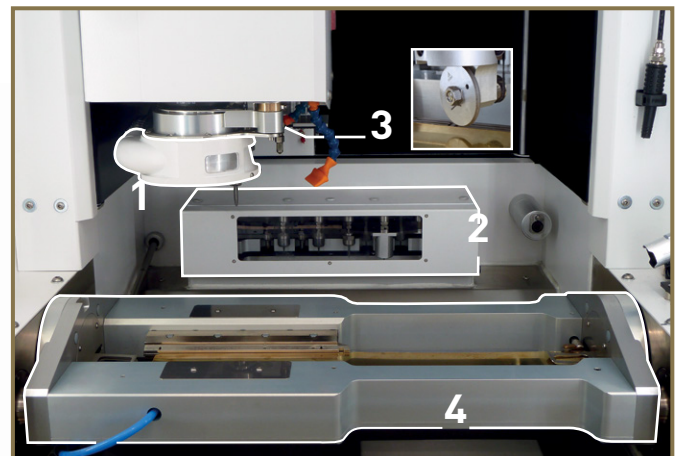


Sisma has developed the latest version of **Twin-E** configured for plate processing by tilting clamps. Now the operator can create nearly-finished precious items by defining:

- **diamond-cutting** effects on both sides of the plate automatically thanks to the mobile vacuum-plane
- desired **laser** operations (marking and cutting)
- desired **milling** operations (engraving and cutting)

*Sisma ha ottimizzato la versione più recente di **Twin-E** configurata per lavorare la lastra con morsa ribaltante; l'operatore è ora in grado di creare oggetti preziosi semifiniti definendo in sequenza:*

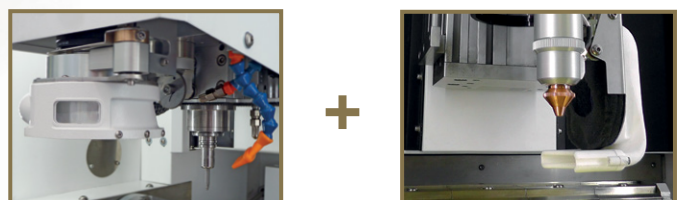
- ogni tipo di **diamantatura** su entrambi i lati della lastra in automatico grazie al piano a vuoto mobile
- ogni tipo di lavorazione **laser** (marcatura e taglio)
- ogni tipo di lavorazione **fresa** (incisione e taglio)



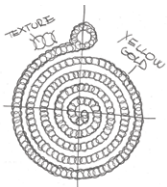
1. Aspiration system with telescopic terminal.
Sistema di aspirazione con terminale telescopico.
2. Extended tool-store with pre-setting and planarity sensor.
Magazzino utensili con pre-setting e tastatore per lastra.
3. Swivelling diamond-cutting disk for illimited effects.
Disco di diamantatura per molteplici effetti.
4. 180° tilting plate-clamp with mobile vacuum plane for back-to-back diamond-cutting.
Traino lastra basculante 180° con piano a vuoto mobile per diamantatura fronte-retro.

TWIN CUT

TWIN-E combined also with a cutting laser source.
TWIN-E combinata anche con un laser da taglio indipendente.



creativity without boundaries



the idea
l'idea



the project
il progetto



the engraving
and diamond cut
l'incisione
e la diamantatura



the laser cutting
il taglio laser



the finished product
il gioiello finito



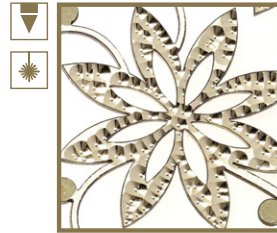
material: BRONZE



Mill-engraved frame
on laser cut.



material: GOLD



Hydro-diamond for
selective decorations.



by courtesy of
IGSS (VI) - Italy



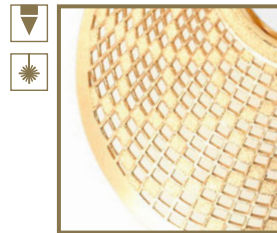
material: SILVER



Back-to-back picture
engraving and contour
mill cut.



material: GOLD



Detailed microcutting
and satin finishing
before bending.



by courtesy of
FEMAR (AR) - Italy



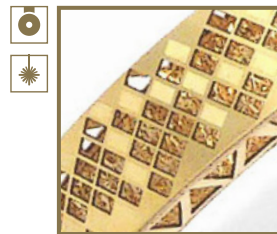
material: GOLD



Line-diamond
on folded surfaces.



material: GOLD



Laser cut and decoration
for precise assembling
into complex objects.



Milling spindle



Diamond disk



Laser marking



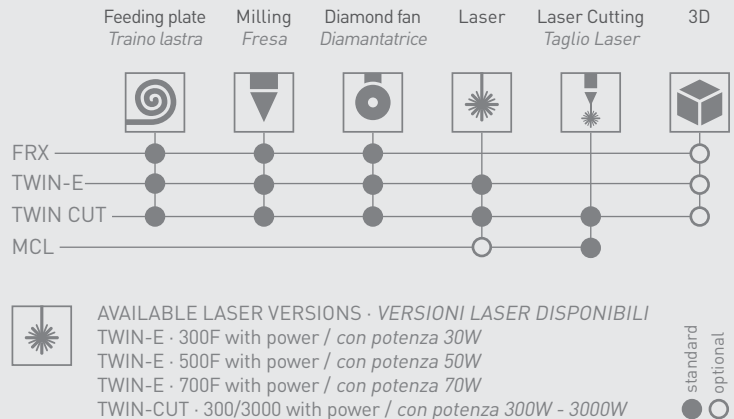
Laser cutting

TWIN-E

TECHNICAL DATA · DATI TECNICI

Working area	Axis - Asse X: 300 mm
Area di lavoro	Axis - Asse Y: 350 mm
	Axis - Asse Z: 200 mm
Axes speed · Velocità assi X-Y-Z:	30.000 mm/min
Axes precision · Precisione assi X-Y-Z:	+/- 0,01 mm
Axes resolution · Risoluzione assi X-Y-Z:	2 micron
Pressurized electrospindle	
Elettromandrino pressurizzato	45.000 rpm · giri/min
Tool change · Cambio utensile	Automatic
Main supply · Alimentazione	230V 50/60 Hz 1Ph
Dimensions (W x D x H)	
Dimensioni (L x P x A)	1800*x1500x2310 mm
Weight · Peso	980 kg

*console included / console inclusa



The features, images, performances, weights and measures contained in the catalogue are completely indicative and approximate and may change without notice.
Le caratteristiche, le immagini, le prestazioni, i pesi e le misure indicate si intendono del tutto indicativi ed approssimativi e possono variare senza preavviso.

SISMA Offices and Services in the WORLD

SISMA LAB S.R.L. · Laser & Automations

via dell'Artigianato, 26 · 36060 Romano d'Ezzelino (VI) · Italy
ph. +39 0424 510050 · fax +39 0424 514035 · info@sismalab.com · sismalab.com

SISMA AREZZO

via P. Gobetti, 23 · 52100 Arezzo · Italy
ph. +39 0575 250960 · fax +39 0575 250402 · info@sismacentro.it · sismacentro.it

SISMA LASER ESPAÑA, s.l.

Ctra. Castellar nº 541 · 08227 Terrassa · Barcelona · España
ph./fax +34 93 4800635 · info@sismalaser.es · sismalaser.es

SISMA LASER - DE

Neumeyerstrasse 48 · 90411 Nurnberg · Germany
ph. +49 (911) 5676947 · mobile +49 (151) 41928809 · webmaster@sisma-laser.de
sisma-laser.de

SISMA MEA

Kuyumcukent, zemin kat, 1. sk., no. 34, Yenibosna · Istanbul · Turkey
ph.+90 212 520 7679 · info@dstmachine.com · sisma.com

MOSCOW · RUSSIA

Yuzhnoportovaya Str. 5/1 · Office 450 · 115088 Moscow · Russia
Ph. +7 (495) 665 49 32 · ilgiz.sisma@gmail.com

DUBAI · UAE · DMCC Dubai Metals & Commodities Centre

Bldg. n°3, Ground Floor, Shop n°F02 · ph. +971(4) 3688737 · fax +971(4) 3688738
dubai@sisma.com · sisma.com

WUXI · CHINA

Room 806, No.10 SZ-HK Metropolis Buliding, No. 299 · Fangcheng Road,
Wuxi, Jiangsu, China · Post code: 214111
ph. +86 0510 88318055 · mob. 13961730295 · wx.sisma@public1wx.js.cn · sisma.com

SISMA MEXICO · Sisma Laser Systems, S.A. DEC.V.

Parque Rio Grijalva 25, casa 3, Col. Cuauhtemoc, Delegacion Cuauhtemoc · CP. 06500,
Mexico D.F., Mexico
ph +52 5552560344 · fax +52 55 52867784
diego@sismalasersystems.com · sismalasersystems.com

SISMA S.p.A.

via dell'Industria, 1
36013 Piovene Rocchette (VI) Italy
tel. (+39) 0445 595511
fax (+39) 0445 595595
info@sisma.com
sisma.com



WITLICH

surface technologies

Hans Wittich GmbH
Kirchstrasse 17
8274 Gottlieben
Schweiz

Tel. 071 666 80 30
Fax 071 666 60 99
info@wittich.ch
http://www.wittich.ch

